

Yielding Valuable Net Returns Before You Even Turn A Wheel

Farming each acre for maximum production with Crop Tech Solutions' **Predictive Management Points (PMP's)** averages a \$71/acre net return for producers.



It's No Secret

The number of companies attempting to offer precision agriculture solutions is overwhelming. These companies often have other primary products and services, which are driven by sales.

The Crop Tech Solutions Difference

We can't say it enough - **Precision agriculture management is all we do.** We don't focus on, sell, or even offer products that effect input costs like seed and chemical. We focus specifically on data and implement solutions that make your operation more efficient and profitable. It's that simple, and it works with over 95% accuracy.

Efficiency is Profitability

No, we're not just cutting input costs to save you money. Farming each acre for its real potential is profitable. Using the best technology to determine max yield on a given acre can help you determine where to spend and where to save on inputs, producing more bushels per acre across individual fields.

Your Crop Tech Solutions Consultant

- ✓ Creates, organizes, and manages your farm data so you can focus on farming.
- ✓ Develops pre-season analytics to assist you in making the most profitable management decisions.
- ✓ Implements accurate prescriptions for seeding rates and input efficiency using your farm data and our collective database of over 1 million acres.
- ✓ Provides post-season analytics detailing your return on investment and highlights trends and opportunities for the next growing season.

Jim Aden, Founder & CEO
jim_aden@croptechsolutions.com
308-529-0149

J.C. Smith, Data Lead, Tech Specialist, Sales
jc_smith@croptechsolutions.com
308-930-0296

Justin Strasburg, Sales Lead, Tech Specialist
justin_strasburg@croptechsolutions.com
308-529-1630

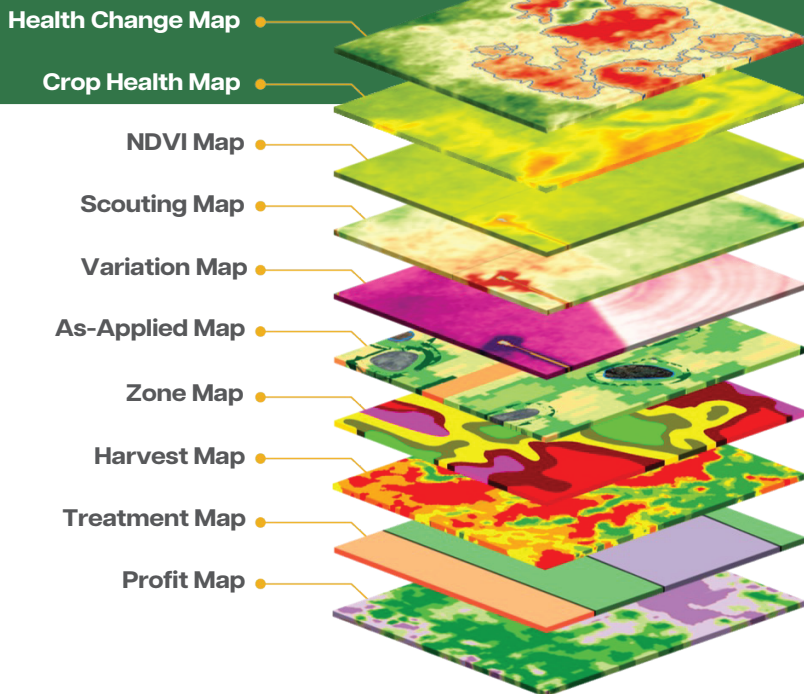
Jake Rubenthaler, Ag Input & Tech Specialist, Sales
jake_rubenthaler@croptechsolutions.com
308-930-0262

Crop Tech Solutions

41115 Road 763
Gothenburg, NE 69138

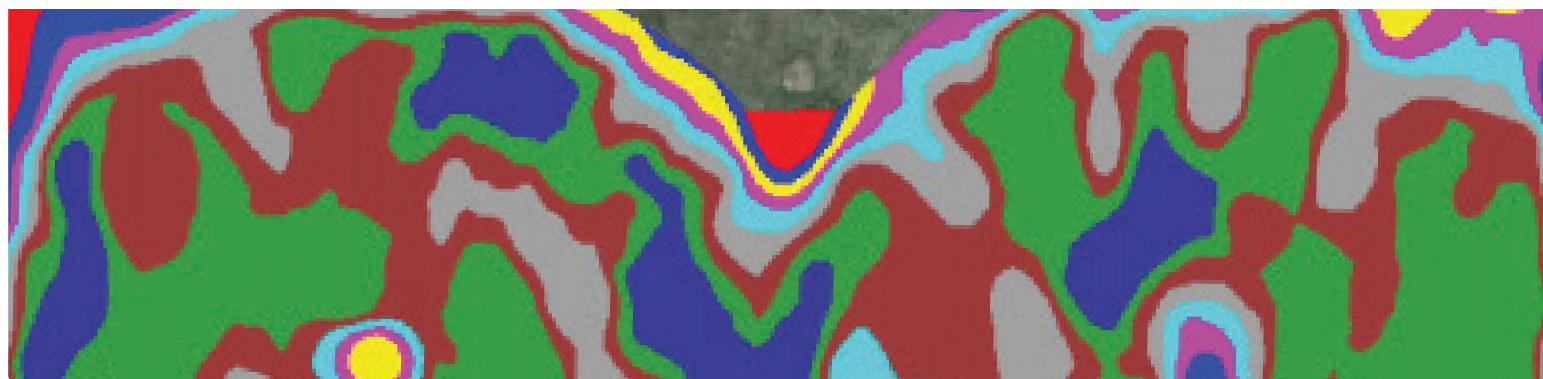
info@croptechsolutions.com
www.croptechsolutions.com

Farming in Layers



Predictive Management Point (PMP) Development

- Data Analysis
- Soil Analysis
- Nutrient Analysis
- Cost Analysis
- Input Analysis
- Profitable Returns



Zone	Area acres	% of Field	20 Yield	21 Yield Goal	21 Yield	22 Yield Goal
Zone 1	12.46	3.81%	110	105	122	128
Zone 2	24.44	7.47%	176	168	177	186
Zone 3	22.81	6.97%	201	191	205	215
Zone 4	12.74	3.89%	206	196	209	220
Zone 5	20.45	6.25%	224	213	226	237
Zone 6	28.73	8.78%	242	230	237	249
Zone 7	46.52	14.21%	250	238	250	263
Zone 8	62.33	19.04%	258	246	262	275
Zone 9	72.54	22.16%	268	255	271	285
Zone 10	24.35	7.44%	280	266	281	295
327.37 ac			Avg. 227.91 bu/ac	Avg. 239.44 bu/ac	Avg. 241.55 bu/ac	Avg. 253.78 bu/ac

11% Yield Increase

Net Return vs. 225 YG

72% of field producing above average

\$0.00

\$26.67

\$63.12

\$95.77